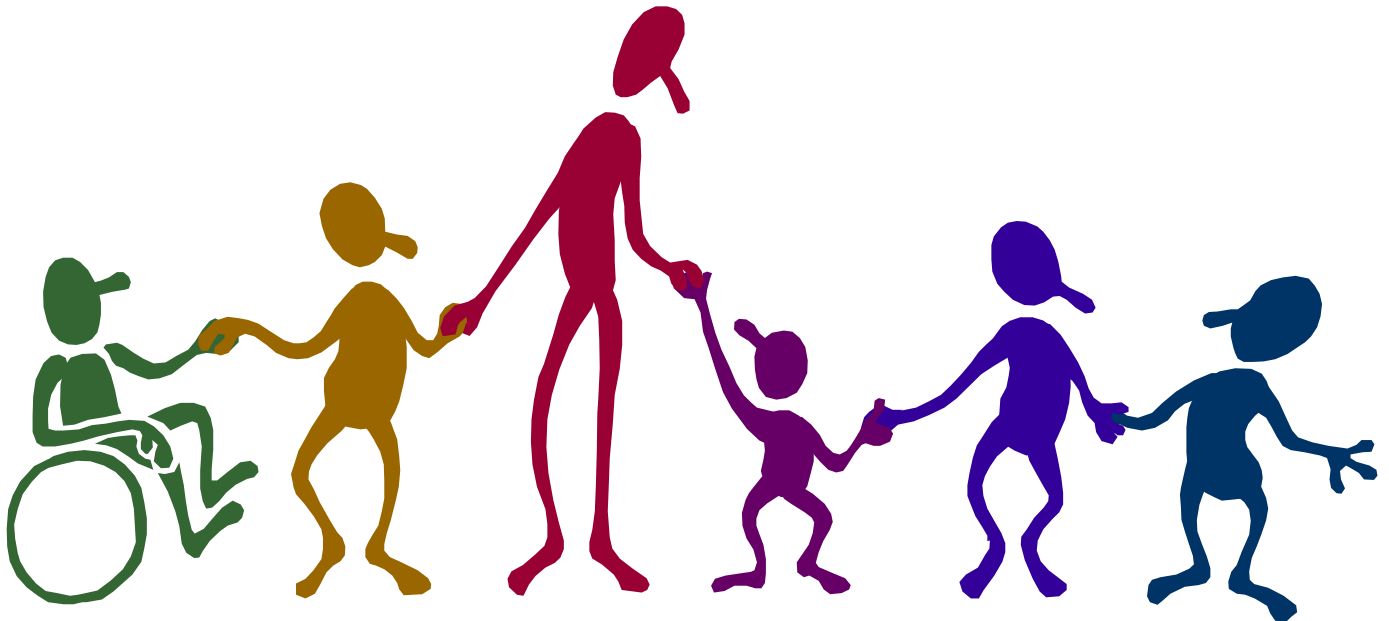


# SIBLING Connections

At

*The Ridge Meadows Child Development Centre (RMCDC)*



*A group to celebrate the many contributions made by  
brothers and sisters of kids with developmental Challenges*

*For boys & girls ages 8 to 12*

*6.00 To 8.00 p.m. on November, 23<sup>d</sup> 2009.*

*To register your child: please contact Catherine or Rahim at RMCDC -*

*Tel. (604) 463 - 0881 extensions 302 and 316, respectively by November, 16th 2009*

